
GLOBAL IMPACT REPORT 2025



A MESSAGE FROM CONEXUS MEDSTAFF

At Conexus MedStaff, our mission is to build healthcare systems that endure, connecting exceptional talent with communities that need them, today and for generations to come. As I reflect on 2025, I am incredibly proud of the growth in our partnerships, the increasing number of beneficiaries we're supporting through our Global Impact program, and how, in our second year of execution, Global Impact has become a core component of the Conexus way.

This year has been defined by the people we've had the privilege to support. I'm proud of all the employees who volunteered their time and energy to make a difference in their communities, and the launch of the Conexus Community Scholarship program especially moves me. This initiative supports students in the communities where our healthcare professionals live and work, providing educational opportunities that create pathways to healthcare careers. Getting to understand the individual stories of these young people, pushing themselves and determined to be part of the healthcare solution, is genuinely inspiring.

I'm thrilled to announce that our investment in Global Impact partnerships increased by over 50%, and our beneficiary reach more than doubled from 2024. This growth reflects our commitment not just to talk about impact but to deliver it where it's needed most.

We're also proud to have launched the Conexus DAISY Award in 2025, recognizing extraordinary nurses who make a profound difference in patients' and families' lives. This prestigious honor celebrates the clinical expertise and compassionate care that defines excellent nursing.

Our commitment to Global Impact and the wellbeing of our people is likely one of the reasons Conexus was named one of the Best Staffing Firms to Work For in the UK in 2025, a recognition that reflects the values we live by every day.

2025 was a year of meaningful progress, as we delivered our first Communication on Progress to the United Nations Global Compact, and we continued to align our operations with universal principles on human rights, labour, environment and anti-corruption.

As we look ahead, we remain committed to finding new ways to make a difference in healthcare for those who need it most. Thank you for being a part of our journey.



ANDREW MORETON
CEO, CONEXUS MEDSTAFF

UNITED NATIONS SUSTAINABLE DEVELOPMENT GOALS



By placing highly skilled international healthcare professionals in diverse healthcare settings across the U.S., Conexus helps improve patient care and alleviate staffing shortages, enhancing health outcomes nationwide. In alignment with SDG 4, Conexus offers robust training and ongoing educational support to healthcare professionals, ensuring their skills are continually developed.

This commitment to professional growth and wellbeing supports a resilient healthcare workforce capable of providing high-quality care and contributes to stronger, healthier communities globally.

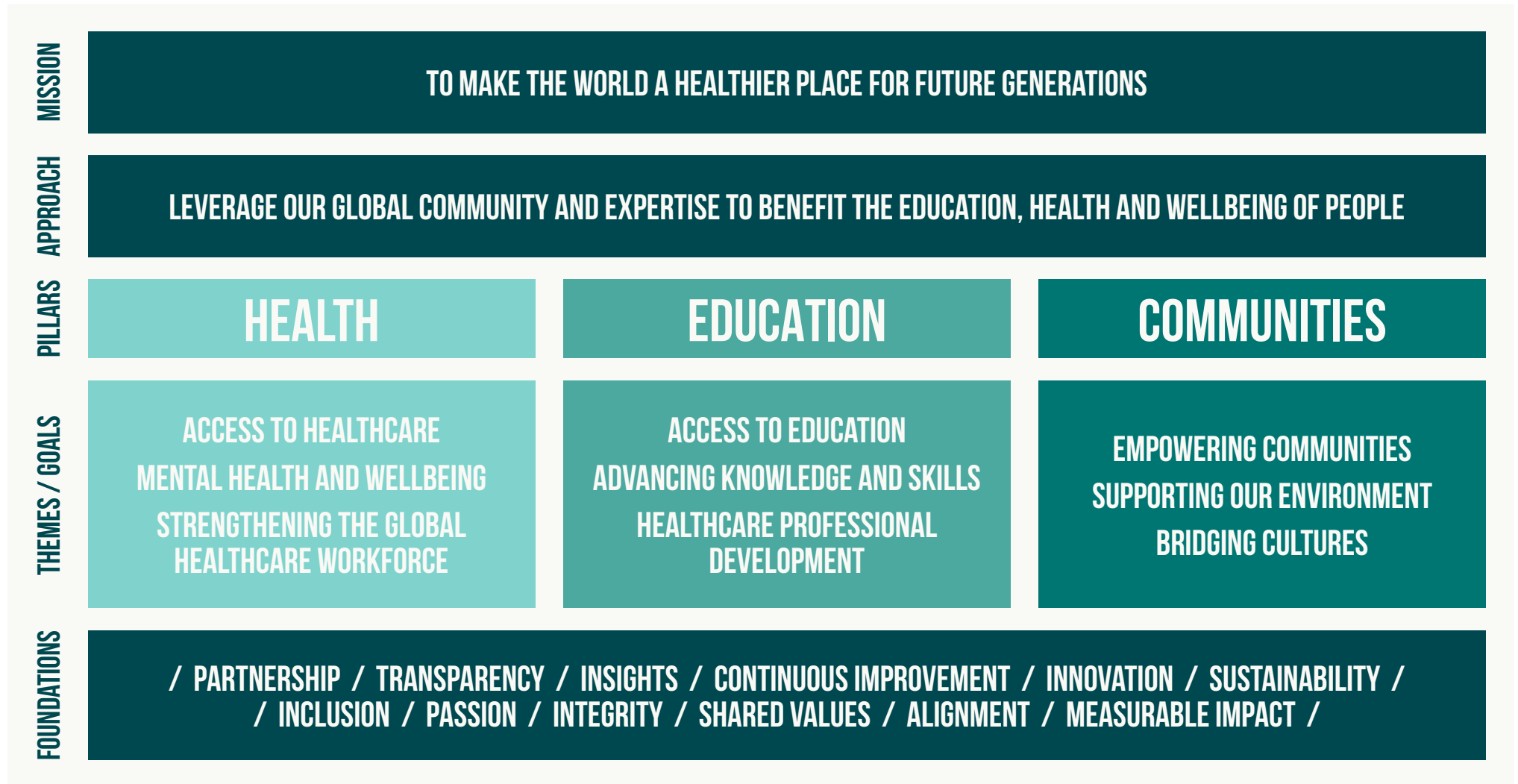
Our commitment to SDG 3 and SDG 4 has been a guiding force in our selection of Global Impact partners who share our vision of improving health and education worldwide.

By collaborating with organizations focused on expanding healthcare access and delivering quality training, Conexus amplifies its impact beyond the U.S. healthcare system.

Our partnerships aim to provide resources and support to underserved communities, enhancing local healthcare capacities and educational opportunities.

Through these alliances, Conexus not only strengthens its dedication to global wellbeing but also fosters sustainable development by empowering communities with the tools they need for lasting health and educational advancement.

GLOBAL IMPACT FRAMEWORK



GLOBAL IMPACT 2025

48,332 62,712

EDUCATION
HOURS

BENEFICIARIES

638 17 2

IN-KIND
DONATIONS

SCHOLARSHIP
AWARDS

UNIVERSITY
PARTNERSHIPS

8 637

GLOBAL IMPACT
PARTNERSHIPS

VOLUNTEERING
HOURS DONATED

YEAR-OVER-YEAR GROWTH

+57% 200%

INVESTMENT IN GLOBAL
IMPACT PARTNERSHIPS

IN-KIND
DONATIONS

+116% +119%

BENEFICIARY
REACH

EDUCATION
HOURS

41%

VOLUNTEER
HOURS

HEALTH
EDUCATION
COMMUNITIES



HEALTH

In 2025, Conexus expanded its health partnerships to six organizations working to deliver better health outcomes for global communities. Our partners work on the front lines of healthcare equity, addressing clean water, nutrition, mental health, maternal care and health infrastructure across multiple countries.

Working in partnership with local governments and health systems, these organizations deliver community based solutions where healthcare access is most critical.



HEALTH

PARTNER SPOTLIGHT: WATER.ORG

Location: Global – 15 countries including Brazil, Mexico, Peru, Bangladesh, Cambodia, India, Indonesia, the Philippines, Kenya, Tanzania and Uganda

Beneficiaries: 1,000 people

Water.org is a global non-profit organization that empowers people living in poverty with lasting access to safe water and sanitation. Today, more than 88 million people around the world can turn on a tap or safely use a toilet because small, affordable loans empower them to get access to safe water and sanitation.

Why Water Matters to Health:

- 2.1 billion people (1 in 4) lack access to safe water
- 3.4 billion lack safe sanitation
- Every two minutes, a child dies from a water-related disease

Safe water isn't just essential for life, it's healthcare itself. Contaminated water spreads disease, prevents proper hygiene and undermines the effectiveness of medical treatments.

The Water.org Model:

Water.org partners with in-country financial institutions to connect families living in poverty with small, affordable loans to fund their own water and sanitation solutions for their homes.

Small loans allow families to install long-term safe water and sanitation solutions that solve their immediate needs, and every repaid loan can go to another family to get the safe water and toilets they need, fast and affordably. It's a pay-it-forward, sustainable system that reaches millions of people each year.

Conexus's support helps provide 1,000 people in need with lasting access to safe water or sanitation, creating healthier communities and enabling better health outcomes for families worldwide.



FROM IMPOSSIBLE CHOICES TO NEW POSSIBILITIES: SALLY'S STORY

Every day, Sally faced a choice no mother should have to make: spend hours collecting water or stay home to care for her four children in the Philippines.

When Water.org partnered with her local bank to provide affordable financing for water and sanitation, Sally accessed a small loan to bring safe water directly to her home. That single change transformed everything.

Today, Sally's family has better health through clean water access. She has time to work and pursue opportunities. Most importantly, she has hope for her family's future.

Sally's story represents millions of families whose lives have been transformed through Water.org and one that Conexus's partnership helps make possible.

HEALTH

PARTNER SPOTLIGHT: ACAP, PHILIPPINES

Organization: Action for the Care & Development of the Poor in the Philippines, Inc. (ACAP)

Location: Philippines

Beneficiaries: 60

ACAP's mission is to end intergenerational poverty in the Philippines through the holistic development of vulnerable children, focusing on education, art and values formation, health and nutrition and community development.

The Project: The community-based supplementary feeding initiative is designed to combat hunger and undernutrition among vulnerable groups, particularly children aged six months to five years old and malnourished pregnant and lactating women.

The program provides:

- Nutritious supplemental meals
- Growth monitoring and health assessments
- Nutrition education for caregivers
- Referrals to health services when needed

Why Nutrition Matters:

Malnutrition in early childhood has lifelong consequences. Children who experience chronic undernutrition in their first five years face:

- Stunted physical growth
- Impaired cognitive development
- Weakened immune systems
- Reduced school performance
- Lower earning potential as adults

By addressing malnutrition early, ACAP helps children reach their full potential and breaks the cycle of poverty that affects entire families.

Holistic Development:

ACAP doesn't stop at nutrition. The organization provides comprehensive support including education assistance, art programs, values formation and community development initiatives that empower families to build better futures.



HEALTH

PARTNER SPOTLIGHT: TAIMAKA, NIGERIA

Location: Gombe State, Nigeria

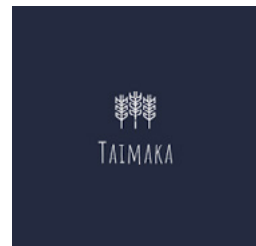
Beneficiaries: 15,000 children

Taimaka is an NGO working to combat acute childhood malnutrition in Gombe State, Nigeria. Globally, 45.4 million children suffer from acute malnutrition, causing 3.1 million preventable deaths annually.

Our Partnership: This is our second year of funding Taimaka's cost-effective, scalable model for malnutrition treatment. The program includes training community health workers and providing digital tools, therapeutic foods and medicines. To date, Taimaka has treated thousands of children with a 81% recovery rate and significantly reduced treatment costs, making care 53% cheaper than legacy approaches.

The Innovation: Taimaka has reimaged pediatric malnutrition treatment by simplifying clinical protocols so that digitally-enabled community health workers can deliver care directly to the most vulnerable communities. This approach brings treatment to families who would otherwise have no access to care.

Taimaka plans to open over five new facilities and treat over 19,000 cases in 2026, expanding access to treatment in underserved communities, reaching the most vulnerable children across Nigeria.



HEALTH



PARTNER SPOTLIGHT: ANGAT BUHAY, PHILIPPINES

Location: Naga City, Philippines

Beneficiaries: 20,000 people

Angat Pinas, Inc., commonly known as Angat Buhay, is a Filipino non-profit organization that aims to empower Filipinos to become communities of active citizens by mobilizing the largest volunteer network in implementing Bayanihan projects.

This year, our grant to Angat Buhay supported the city-wide implementation of PhilHealth’s YAKAP Caravan, a community-based initiative that brings social health insurance enrolment directly to barangays. Many residents of Naga City are not aware of their healthcare rights and that they can access free healthcare services. Through coordinated outreach activities and the support of local health workers, the caravans help residents register to access free primary care services, including consultations, laboratory tests and essential medicines.

Thanks to Angat Buhay’s volunteer network, PhilHealth YAKAP coverage in Naga City increased from 22% (around 47,000 residents) in May 2025 to 46% (over 102,000 residents) in December 2025, significantly expanding access to primary care and financial protection for thousands of families. By working in partnership with local government offices, civil society organizations and external partners this project has led to tangible improvements in the lives of over residents of Naga City.

CASE STUDY: MARIA

Maria lives with a chronic condition and she had long struggled to access regular medical care because of the cost. During the YAKAP Caravan, barangay health workers helped guide her through the registration process and ensured she understood how to use her benefits. Not long after her enrolment, Maria was able to access free consultations and medications for her condition. Reflecting on the experience, she shared: “Before this, I could not afford regular check-ups, but now my family and I feel secure knowing we have access to health services.”



HEALTH

A YEAR AFTER THE STORM: BENJIE'S VISIT

Following Tropical Storm Kristine in October 2024, which caused massive flooding and damaged medical equipment across Naga City, Conexus funding last year helped rehabilitate healthcare services in two large barangays. On October 22, 2025, exactly one year after Typhoon Kristine, Benjie Jalasco, Conexus Community Development Manager, visited the two barangays to see the impact of our support.

“ Visiting and seeing the impact of our support through Angat Buhay was truly heartwarming. It reminded me that what we do at Conexus MedStaff goes beyond helping our healthcare professionals. It also touches the lives of many others in the communities where we can extend our help. ”

BENJIE JALASCO, RN, MAN, COMMUNITY DEVELOPMENT MANAGER, CONEXUS MEDSTAFF

Barangay Councilor Corazon Bacsa, who has led the Health Committee in Concepción Pequeña for 13 years, shared: “The medical equipment provided through the support of Conexus MedStaff and Angat Buhay has made a big difference, especially the sterilizer machine we now use to sterilize instruments for minor surgeries. Having the autoclave machine has helped us prevent infections and complications.”

Barangay Captain Juan Francis Mendoza expressed deep gratitude: “The equipment has made healthcare services more accessible and convenient for residents, who no longer need to line up at hospitals for minor medical services. We hope our community will soon have mental health services available as well.”

In Barangay San Felipe, midwife Ms. Elisa Belen shared how the nebulization machine and oxygen tank are regularly used for patients with asthma, especially during emergencies.



MEETING MAYOR LENI ROBREDO

One of the most memorable moments during Benjie's visit was meeting Mayor Leni Robredo, former Vice President of the Philippines and Chairperson of the Angat Buhay Foundation. Mayor Robredo personally expressed her gratitude to Conexus MedStaff for the continued support and partnership.

HEALTH

PARTNER SPOTLIGHT: VILLAGE HOPECORE INTERNATIONAL, KENYA

Location: Tharaka Nithi County, Kenya

Beneficiaries: 388 (88 children + 300 family members)

Village HopeCore International is a community development organization with a mission of promoting sustainable livelihoods and family health in Africa through capacity building, microfinance, and access to quality healthcare.

Our Partnership: Conexus continues its partnership with Village HopeCore to support Maternal and Child Health (MCH) clinics in outreach locations across Tharaka Nithi County. A key component of these clinics is growth monitoring and targeted nutrition interventions for children under the age of five.

Since January 2024, Village HopeCore has been identifying malnourished children through growth monitoring at mobile MCH clinics. Children identified as malnourished receive targeted nutrition support, including therapeutic foods, nutritional counseling for caregivers and regular follow-up monitoring.

The Model: Village HopeCore’s mobile clinic model brings healthcare directly to remote communities where families would otherwise have no access to medical services. By combining prenatal care, immunizations, health education and nutrition interventions, the program addresses multiple health challenges simultaneously.



HEALTH

PARTNER SPOTLIGHT: NYAYA HEALTH NEPAL

Location: Dailekh District Hospital, Karnali Province, Nepal

Beneficiaries: 23,000 people

Nyaya Health Nepal (NHN) works to improve healthcare services for underserved populations in rural Nepal. This project supports the strengthening of Nyaya Health Nepal's Electronic Health Record (EHR) system at Dailekh District Hospital with a focus on building the capacity of healthcare providers and administrative staff.

Why This Matters: In rural Nepal, healthcare systems often rely on paper records that can be lost, damaged or difficult to access when patients move between facilities. This creates gaps in care, medication errors and missed follow-up treatments. An EHR system improves the quality, efficiency and continuity of care by ensuring patient information is accessible when and where it's needed.

The Project: Conexus funding supports training for healthcare professionals and administrative staff on how to use and maintain the EHR system. This includes:

- Technical training on data entry and system navigation
- Clinical workflow integration
- Data quality and privacy protocols
- Ongoing technical support and troubleshooting.

This project is part of a larger initiative supporting eight district hospitals across Karnali province, one of Nepal's most remote and underserved regions.

Long-Term Impact: By investing in digital health infrastructure and training, this partnership helps create a more resilient healthcare system that can provide better care to 23,000 people in the Dailekh district. Healthcare professionals gain skills that improve patient outcomes, and the EHR system creates a foundation for data-driven health planning and resource allocation.



HEALTH
EDUCATION
COMMUNITIES



EDUCATION

Conexus provides access to knowledge and growth. Through our Global Impact partnership grants and our education platform for healthcare professionals, Conexus Academy, we push the boundaries of learning and potential to make a positive and lasting impact.

By tackling inequalities in education, we can inspire the next generation to excel in healthcare and beyond.



EDUCATION

PARTNER SPOTLIGHT: SABRE EDUCATION, GHANA

Location: Shama and KEEA districts in the Western and Central Regions, Ghana

Beneficiaries: 3,244 (3,000 children + 244 adults)

Sabre Education Limited is a non-profit dedicated to transforming early childhood education in Ghana. Working in partnership with the government, Sabre has been delivering sustainable and impactful early childhood education programs for over 20 years, addressing the critical need for high quality kindergarten education.

The Challenge: In Ghana, 80% of children complete primary school without basic literacy or numeracy skills. This crisis begins in early childhood, where overcrowded classrooms, under-trained teachers and lack of age-appropriate learning materials prevent children from building strong educational foundations.



Our Partnership: This is our second year supporting Sabre Education, demonstrating our commitment to sustained impact in early childhood development. The partnership supports Sabre's initiative in the Shama and KEEA districts, an area facing challenges such as high enrollment, overcrowded classrooms and infrastructure issues.

The Approach: The project focuses on working with 60 low-fee private schools with two key interventions:

1. Improving classroom environments – Creating play-based learning spaces with appropriate materials
2. Enhancing teacher training – Equipping teachers with skills to deliver quality play-based education through workshops.

Play-based learning approaches help children develop cognitive, social and emotional skills through structured activities that feel like play. This method has been proven more effective than rote memorization for young learners.

By partnering with Sabre Education to implement play-based learning approaches, we're helping create better educational foundations for thousands of children in the area.



EDUCATION



PARTNER SPOTLIGHT: FAIRPLAY FOR ALL FOUNDATION, PHILIPPINES

Location: Payatas, Metro Manila, Philippines

Beneficiaries: 25 students

Fairplay for All Foundation is a community-based charity in Payatas, one of the largest and poorest communities in the Philippines. Fairplay believes that where you're born should not determine your whole future and so they work to level the playing field.

Our Partnership: This is our second year supporting Fairplay's scholarship program, which helps students from elementary all the way through college. The program provides tutorials and mentoring sessions to improve academic performance, along with holistic support including:

- Transportation to and from school
- School uniforms and basic supplies
- Daily lunches
- Academic support and tutoring
- Social and emotional mentoring
- Life skills development

The Model: Through holistic mentoring, Fairplay scholars become tutors, players become coaches, and those who are mentored become mentors for the next generation, paying it forward and creating a caring community together.

Fairplay uses football (soccer) as a universal tool to improve the wellbeing of the community. The program provides structure, discipline, teamwork skills and healthy physical activity alongside academic support. The partnership between Conexus and Fairplay has even evolved to provide First Aid training and Career pathways sessions for young people.



EDUCATION



RAY ALLEN

Ray Allen is a Level 2 nursing student, supported by a scholarship from the Conexus and FairPlay For All partnership.

By investing in education from elementary through college, Fairplay carves a pathway out of poverty for the next generation.

“ I enjoy being a scholar because it helps me learn, make my family proud, and pursue my dreams. ”

Impact on Mental Health:

This holistic care helps promote good mental health and offers financial incentives, which is critical to making a positive impact in young lives. Many families in Payatas face extreme poverty and scholarship support removes the financial burden that often forces children to drop out of school and begin working at young ages.

Preparing for Higher Education:

Conexus funding specifically supports the “Preparation for Higher Education” component, which helps scholars transition from secondary education to college or vocational training.

This includes:

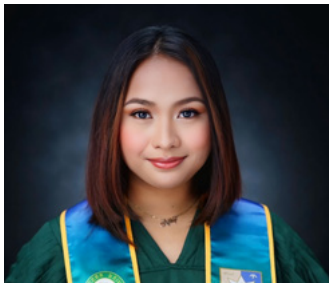
- College entrance exam preparation
- Career counseling and exploration
- Application support for scholarships and financial aid
- Study skills for higher education success
- Weekly planning to help with budgeting, cooking classes and equipment to help them transition to independent living.



EDUCATION

CONEXUS COMMUNITY SCHOLARSHIP

In 2025, Conexus launched the Community Scholarship program, supporting students in communities where our healthcare professionals live and work. This initiative provides educational opportunities that create pathways to healthcare careers for the next generation.



ASHLEY MAE

A recent nursing graduate from the University of Santo Tomas in Manila, Ashley is driven by her passion for compassionate patient care. Her experience as a student nurse fueled her commitment to making healthcare accessible and equitable for all.



JOHN REY

A dedicated nursing student from Cebu, John Rey combines academic excellence with hands on clinical experience. His goal is to bring quality healthcare to underserved communities while advancing his skills in critical care settings.



ALGEN JAN

A nursing graduate from Far Eastern University in Manila, Algen's personal health journey inspired his calling to nursing. He excels in high pressure environments and aspires to work in emergency medicine, combining clinical expertise with compassionate advocacy for patients.



WHY COMMUNITY SCHOLARSHIPS MATTER

By investing in the educational aspirations of students in these communities, Conexus creates a ripple effect: educated healthcare professionals who stay in their communities, strengthen local healthcare systems and reduce the global shortage of skilled medical staff.

EDUCATION

CONEXUS ACADEMY

In 2025, we were proud to deliver over 48,000 free education hours through one-on-one coaching, webinars and study programs to nurses and medical technologists around the globe, helping them gain knowledge and grow professionally. Conexus Academy delivers a personalized plan to guide progression.

Our in-house Conexus Academy educators help equip international nurses with essential skills and knowledge that not only prepare them for deployment but also enable them to make an immediate impact in their home countries.

While waiting to deploy, these nurses apply their training to enhance patient care, implement advanced practices and support underserved healthcare systems. This ripple effect strengthens global health communities, fostering improved health outcomes and sharing critical expertise worldwide.

Two healthcare professionals were awarded scholarships in 2025 to help advance their knowledge and support excellence in healthcare. By investing in professional development, Conexus aims to create a future generation of healthcare leaders.



EDUCATION ADVANCEMENT FOR REGISTERED NURSES (EARN) SCHOLARSHIP:

One registered nurse received this scholarship, which helps them pursue advanced certifications, degrees and specialized training.

EARN 2025 RECIPIENT: JENNIFER REPUESTO, RN.

“I have been a labor and delivery nurse since I started my career. Helping every mom have their precious baby brought me so much joy and satisfaction in my life. Being able to achieve the EFM certification will give me reassurance and confidence in every decision I make for the care of my patients.”

CONEXUS GROWTH AND OPPORTUNITY FOR THE ADVANCEMENT OF LABORATORIANS (GOAL) SCHOLARSHIP:

One medical laboratory scientist received funds designed to advance expertise in laboratory science.

GOAL RECIPIENT 2025: SUSHMITA SHRESTHA

“People like Sushmita are the future of the medical technology field and help ensure patient care is the best it can be. She is one of the few individuals I would earnestly recommend for continued education, so she can further optimize her abilities in medical and clinical laboratory science.”

Our scholarship recipients demonstrate excellence, commitment and a patient-first approach and are praised by their healthcare facilities for delivering high quality care.

HEALTH
EDUCATION
COMMUNITIES



COMMUNITIES

At the heart of our Global Impact framework is our Communities pillar. We strive to make positive, enduring social impacts in our Conexus Communities. This includes giving back to causes close to our employees' hearts, in our office locations, together with our partners' outreach programs and in our healthcare professionals' home countries.

In 2025, Conexus employees volunteered over 600 hours of working time to improve their local communities. Employees supported a wide range of causes including natural disaster cleanup efforts, food banks, mentoring youth and fundraising for good causes.



COMMUNITIES



LANCASHIRE, UK

On Friday, 9 May, ten enthusiastic Conexus volunteers spent the day at the Calvert Trust in the Lake District, helping with essential maintenance at the site's boathouse in preparation for the summer season. Tasks included weeding, washing boats, and general upkeep to ensure the facilities are ready for visitors.

The Calvert Trust is a charity dedicated to providing outdoor adventure experiences for people with disabilities, enabling individuals of all ages and abilities to enjoy activities such as sailing, canoeing, climbing, and horse riding in a safe and supportive environment. The boathouse is a key part of the experience, offering access to water-based activities that help build confidence, independence, and joy. Conexus has proudly supported the Calvert Trust for over 10 years, through volunteering, fundraising and donations.



MANILA, PHILIPPINES

On December 10 and 11, 2025, the Conexus Experience Team organized a two-day giving activity with our healthcare professionals living in Manila. We supported two organizations:

Bahay Aruga (translated as "House of Care"), which provides care for children undergoing cancer treatment. Bahay Aruga offers shelter to patients and their families while they undergo routine treatment at a public hospital in Metro Manila.

CRIBS Foundation in Antipolo, which houses abandoned babies and vulnerable children who can no longer stay with their families.

The team packed food and nutrition items, art supplies, multivitamins and hygiene products based on wish lists provided by both foundations and delivered them to support the organizations' work.

Health packs delivered: 90

COMMUNITIES

VOLUNTEER SPOTLIGHTS

GENEVIA, USA REVENUE ANALYST

Volunteered at Sloan STEM + Arts Camp, helping students explore science, technology and creativity through hands-on activities. Genevia's work with the Robotics class inspired her nephew and other children to discover new passions and build confidence for their futures.



ANDREW, UK CEO

Andrew completed a 50km Peak District hike, raising over £1,000 for Ambitious About Autism. His challenge supported vital services for neurodivergent children and families and also highlighted the importance of awareness, understanding, and community support.



VICKI, UK INTERNATIONAL RECRUITER

Participated in SPACE's "big clean," refreshing the play area and sensory room for children with special needs. This welcoming center provides accessible facilities and support, helping families connect and children enjoy safe, inclusive activities.



MARK & KIMBERLY, PHILIPPINES LICENSING & CREDENTIALING SPECIALISTS

Volunteered with PETA Asia's Ampon Alaga Foundation, walking rescue dogs, donating food and showing love to animals in need. Their work with Donna, a cancer surviving rescue dog, reminds them that small acts of care create real impact in their community.



COMMUNITIES

EMPLOYEE AWARDS

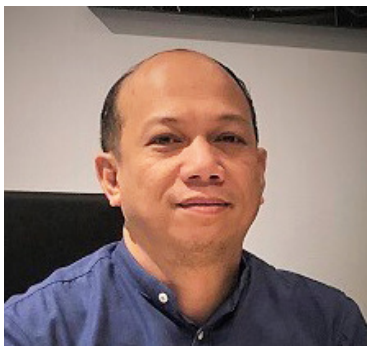


HEALTHCARE PROFESSIONAL COMMUNITY AWARD WINNER

Kristel Maguy Sio, RN, from Senegal, was recognized for her extraordinary dedication to empowering women and girls through healthcare education and advocacy.

Beyond hospital volunteering, Kristel has also supported La Maison Du Fils, a local orphanage that relies entirely on donations to care for children in need.

After visiting the orphanage through a community donation initiative, she felt deeply connected to the organization and chose it as the recipient of her Community Award donation, ensuring the support goes directly to the children and families who need it most.



EMPLOYEE COMMUNITY AWARD WINNER

Benjie Jalasco was honored for his outstanding contributions to nursing education. As a panelist for university case presentations, career pathway speaker for 500+ students, and Global Impact champion in the Philippines, Benjie mentors aspiring nurses and strengthens partnerships that shape the future of healthcare.



HONORING NURSES INTERNATIONALLY
IN MEMORY OF J. PATRICK BARNES

LAUNCHING THE DAISY AWARD IN 2026

In 2025, Conexus became a partner of The DAISY Award, an international recognition program celebrating extraordinary nursing care. In 2026, we'll begin accepting nominations from patients, families and colleagues to honor nurses who exemplify compassionate, excellent care. Award recipients will receive a certificate, DAISY Award pin and recognition among their peers.

We're excited to celebrate the nurses who make a profound difference in the lives of patients and families.

2025 IMPACT

The charitable gifts sent from Conexus MedStaff in 2025 made an incredible impact around the world.

GRATITUDE FROM GIFT RECIPIENTS

“ I am so grateful for this gift and feel appreciated and loved. Thank you for making people happy and may your heart be filled with joy for the good deeds you have shown. ”

NARAH

GIFTS FOR GOOD PARTNERSHIP

At Conexus, we empower international nurses and medical technologists while driving positive global change. Through our partnership with Gifts for Good, we align with values by offering gifts that give back to communities worldwide. Our appreciation and milestone campaigns have made a meaningful impact on our healthcare professionals, client partners and staff.

As a woman-owned small business and Certified B Corporation, Gifts for Good products meet the highest standards of verified social, economic, and environmental impact.



210

CHILDREN RECEIVED A ONE-YEAR SUPPLY OF LIFESAVING VITAMINS

108

WEEKS OF SAFE WATER, IMPROVED HYGIENE AND SANITATION WERE PROVIDED TO PEOPLE IN NEED

689

MEALS WERE PROVIDED TO CHILDREN AND PEOPLE IN NEED (329 TO CHILDREN IN USA, 360 TO PEOPLE IN NEED)

420

MONTHS OF PRENATAL VITAMINS WERE PROVIDED TO MOMS IN NEED

18

MONTHS OF SCHOOL SUPPLIES WERE PROVIDED TO CHILDREN IN NEED IN THE USA

48

RIDES TO TREATMENT FOR CANCER PATIENTS WERE GIVEN

52

HOURS OF EMPLOYMENT WERE PROVIDED TO ARTISANS AND WOMEN WITH BARRIERS TO SAFE, DIGNIFIED WORK

18

DAYS OF FOOD WAS PROVIDED FOR RESCUE ANIMALS

33

HOURS OF CARE WERE PROVIDED TO RESCUE ANIMALS

ETHICAL RECRUITMENT & PRACTICES

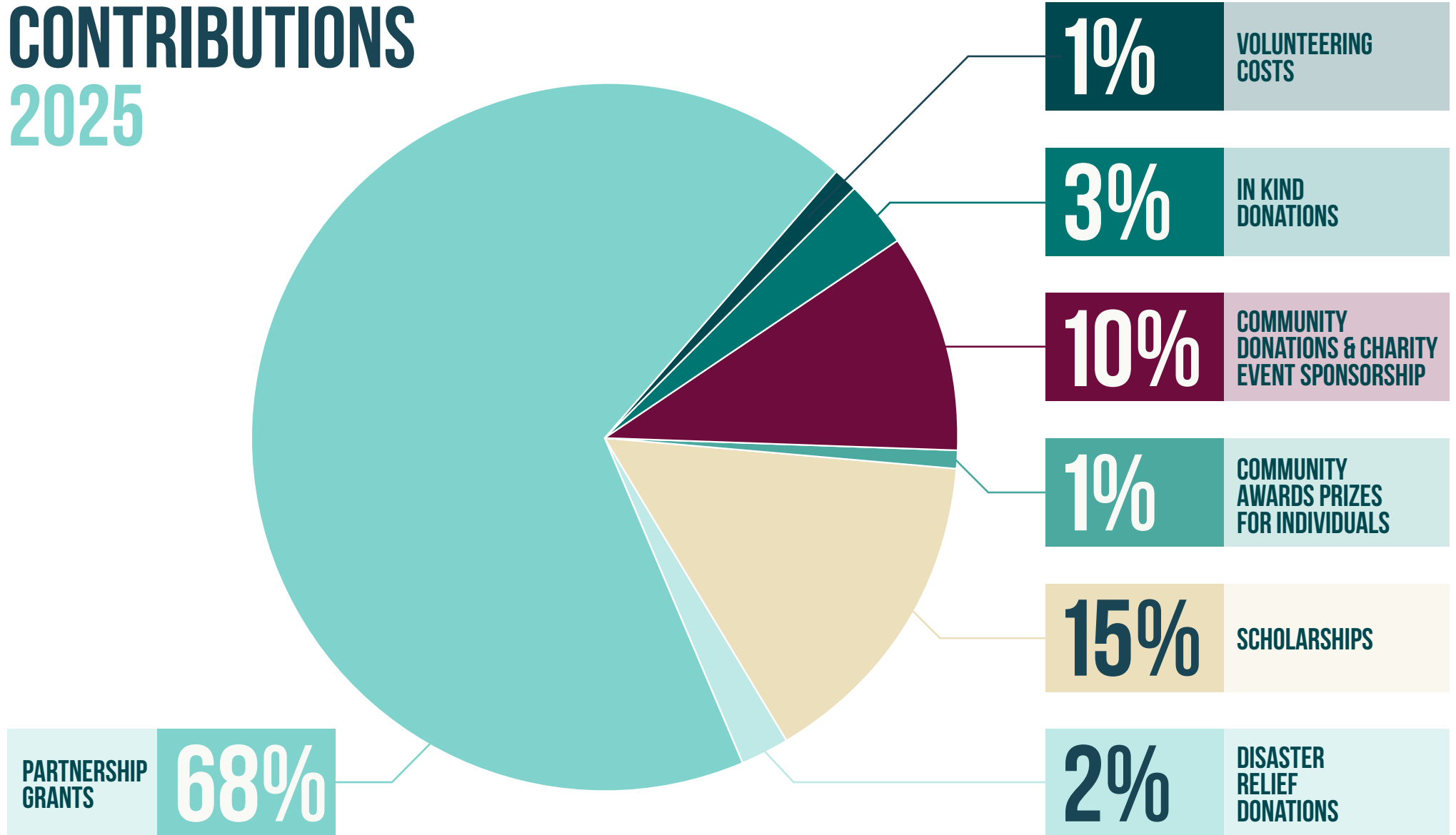
Fairness, integrity, and transparency are at the heart of Conexus, so we can provide the best possible experience to our healthcare professionals and support the wellbeing of patients.

We are a proud member of The American Association of International Healthcare Recruitment (AAIHR), which is the preeminent advocate for the ethical international recruiting industry. Employees are guided by, and adhere to, the Code of Conduct. We provide candidates with clear, honest information about employment opportunities, contract terms and the immigration process. We believe that ethical recruitment is key in strengthening the global healthcare workforce.

Conexus has earned The Joint Commission's Gold Seal of Approval for Health Care Staffing Services Certification. The Gold Seal is a symbol of quality that reflects an organization's commitment to providing safe and quality patient care. The Certification is awarded to organizations that demonstrate compliance with rigorous performance standards, ensuring safe, high quality services to client healthcare systems.



CONTRIBUTIONS 2025



LOOKING
FORWARD



LOOKING FORWARD TO 2026

As we look ahead to 2026, Conexus MedStaff remains committed to deepening our global impact and strengthening the support we provide to our communities, employees and the patients our healthcare professionals serve. Building on the progress made in 2025, we will continue to develop meaningful partnerships and broaden our reach through innovative Global Impact programmes and enhanced collaboration. We're excited to launch our new Community Grants programme which will allow us to distribute funding more broadly, empowering grassroots initiatives and ensuring that meaningful help reaches places where even a small grant can make a significant difference.

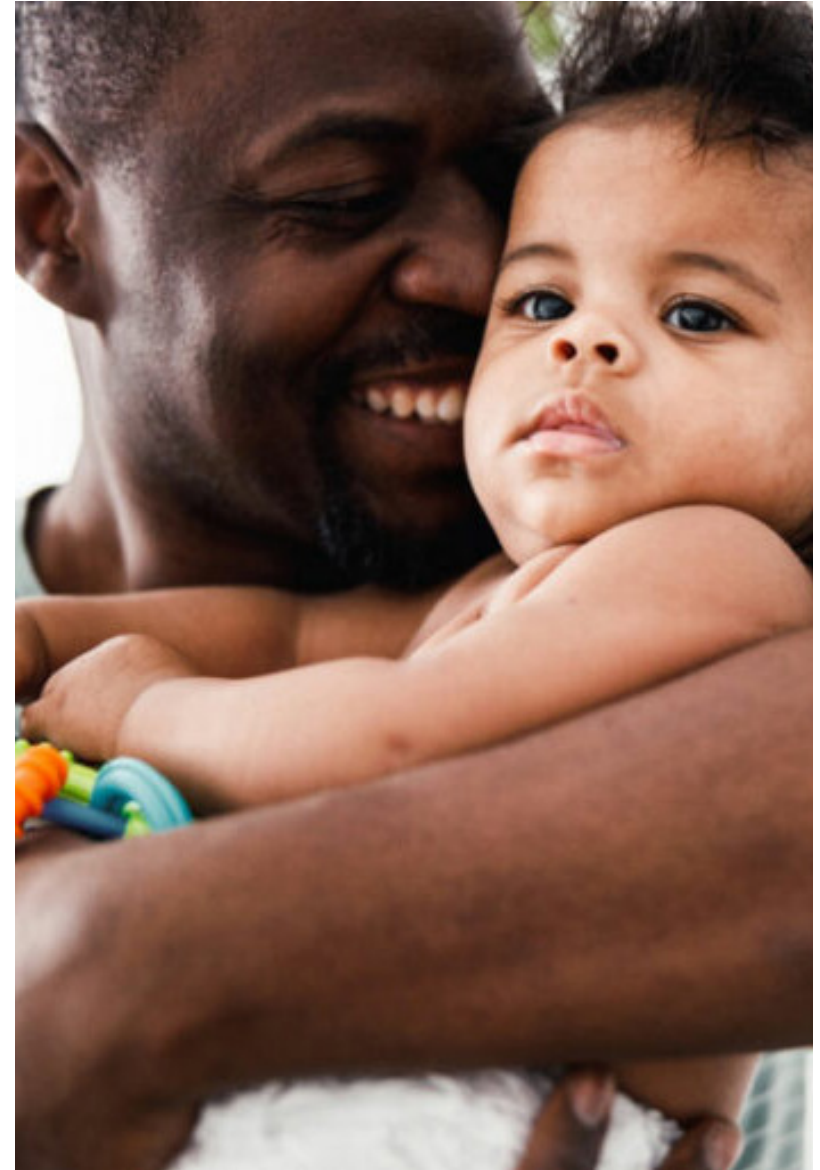
Following the success of last year's launch, we also plan to expand the Conexus Community Scholarship to support even more aspiring nurses, working closely with additional university partners to connect with students who will benefit most. And to ensure a smooth transition and learning journey for our healthcare professionals entering U.S. practice, we will continue investing in the technology and systems that underpin our Conexus Academy clinical education programme.

In May 2026, we will also introduce our first annual Conexus Day, a day focussed on giving back to communities, employee engagement and celebration. One of the core elements of the day will be supporting local charities through our volunteering and fundraising efforts.

As part of our commitment to the United Nations Global Compact, we will deliver our second Communication on Progress, further strengthening the transparency and accountability of our external reporting. A key milestone will be the rollout of our updated mandatory training and compliance programme, reinforcing our dedication to responsible business practices and education of our colleagues.

Throughout 2026, we will continue to advance our Environmental, Social, and Governance (ESG) roadmap, including onboarding suppliers aligned with our values, increasing impact reporting, supporting ethical recruitment worldwide and progressing our People strategy.

Together, we look forward to a year of sustainable growth, purpose and positive change as we work toward a healthier, more resilient world.



2026 GOALS

**BENEFICIARIES
OF OUR GLOBAL
IMPACT GRANTS**

70,000+

**FREE EDUCATION HOURS
FOR HEALTHCARE
PROFESSIONALS**

30,000+

**VOLUNTEERING
HOURS
DONATED**

750+

**SCHOLARSHIP
AWARDS**

20+



UNITED STATES

11750 Katy Freeway
Suite 750
Houston
Texas 77079
USA

PHILIPPINES

95 One Filinvest Building,
Ortigas Center
Pasig City
Philippines

UNITED KINGDOM

White Moss Business Park
West Lancashire Investment Centre
Skelmersdale
WN8 9TG
United Kingdom

